

**VIP II™**  
**PERFORMANCE HARDWOOD SYSTEM**

[connorsports.com](http://connorsports.com)

 **CONNOR SPORTS**  
*Where Champions Play™*



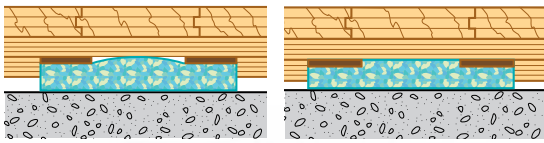
# VIP II™

## PERFORMANCE HARDWOOD SYSTEM

**CONNOR SPORTS**  
Where Champions Play™

Our most advanced premium performance flooring system featuring our patented Dual Dampening Vibration Control™ and Athletic Response Ridge™ for the ultimate combination of multi-athlete resilience, comfort and uniformity.

Can be installed with Secure Grip Technology™ for diverse site challenges and tight schedules.



### STAGE ONE

Reacting to light athletic loads or individual players

### STAGE TWO

Reacting to heavy athletic loads or multiple participants



Wofford College

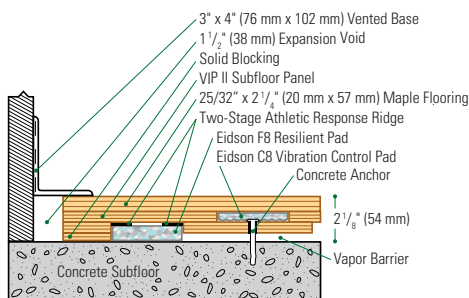


Northwestern University

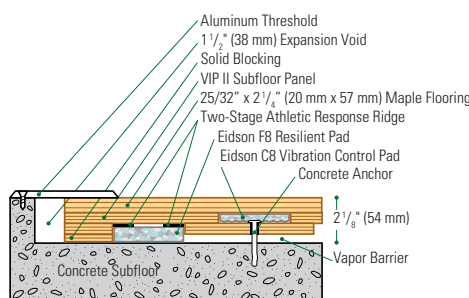


Golden 1 Center, Sacramento Kings

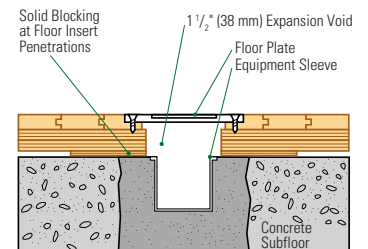
### Wall Base Detail



### Threshold Detail (Optional Accessory)



### Equipment Detail (Optional Accessory)



Slab Depression: 25/32" (20 mm) flooring – 2 1/8" (54 mm) • 33/32" (26 mm) flooring – 2 3/8" (60 mm)

Manufacturing:  
**ISO 14001:2004**  
CERTIFIED



**Recycled Contribution:**  
Includes components with recycled content



**Testing Laboratory:**  
United States Sports Surfacing Laboratory



**Certified Testing:**  
ISS Scientific Body Membership



**Green Status:**  
Managed Forests, Certification Available

Customer Service: 800.283.9522 | [info@connorsports.com](mailto:info@connorsports.com) | [connorsports.com/products](http://connorsports.com/products)

**Where Champions Play™**

